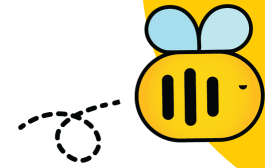




Instructions



Bee House Kit with Mason Bees

Bee House Placement

- Select a location that faces South to South-East, morning sun is optimal to warm the bees so they can begin to fly. Provide afternoon shade in hot locations that are consistently above 32C.
- Install bee house on a sturdy wall or fence, at eye level for easy observation of bee activity, about 5ft (1.5m) from the ground to protect from pests and predators.
- Locate the house within 300ft (100m) of your flowers.
- Position your bee house away from birdhouses and bird feeders.

Setting Up your Bee House for Mason Bees

In the spring when the blooms are opening and weather warms to 10C, set up the bee house. Install to a wall, fence, or flat surface by placing screws (recommended) or nails through the base mounting holes.

Place BeeTubes (8mm) for mason bees and set your mason bee cocoons on top and towards the back. The node end of the tubes should be at the back of the bee house)

Clayey mud is vital to mason bee nesting. If needed, add Mason Bee Mud Mix to a hole in the ground within 25ft of your bee house or place in a container next to a similar container with water.

When all female mason bees are done nesting, remove the 8mm BeeTubes and store with open end facing up in a BeeGuard Bag.

The spring mason BeeTubes (tubes/reeds) and cocoons will need to be returned in fall to Pollinate Canada between October and December. They will be stored over winter with humidity control for next spring.